

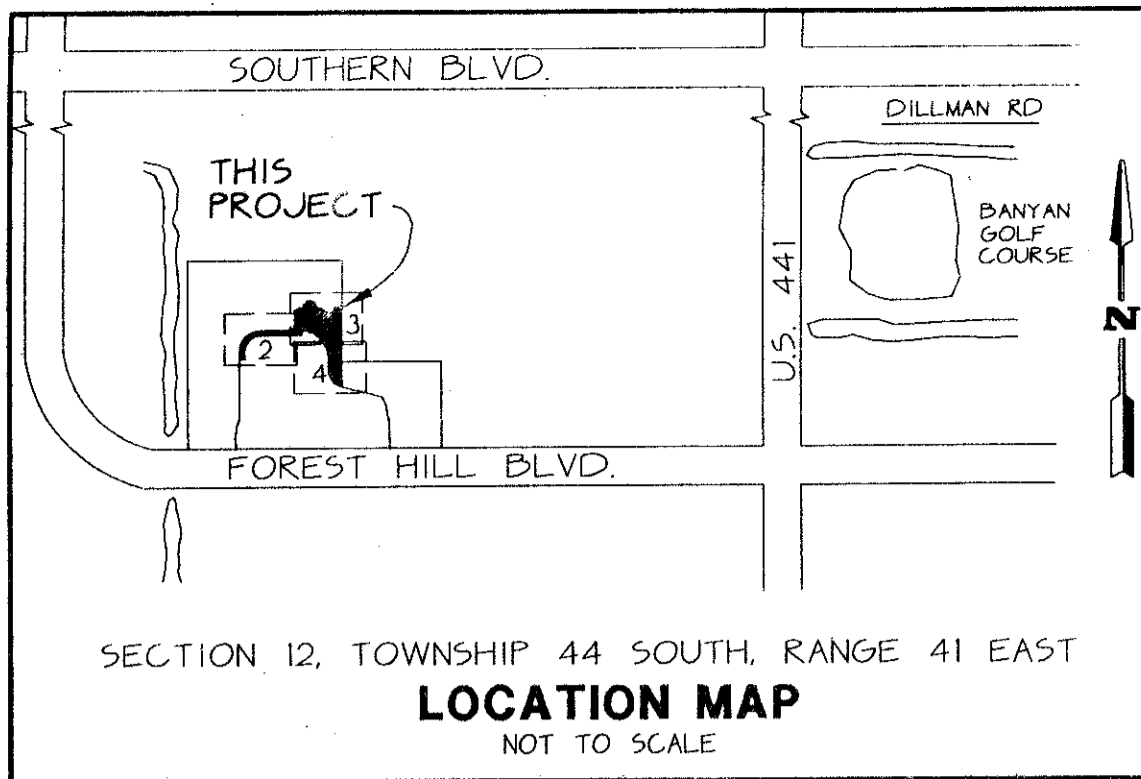
WELLINGTON'S EDGE, PARCEL 77 - PHASE 1, A P.U.D.

167

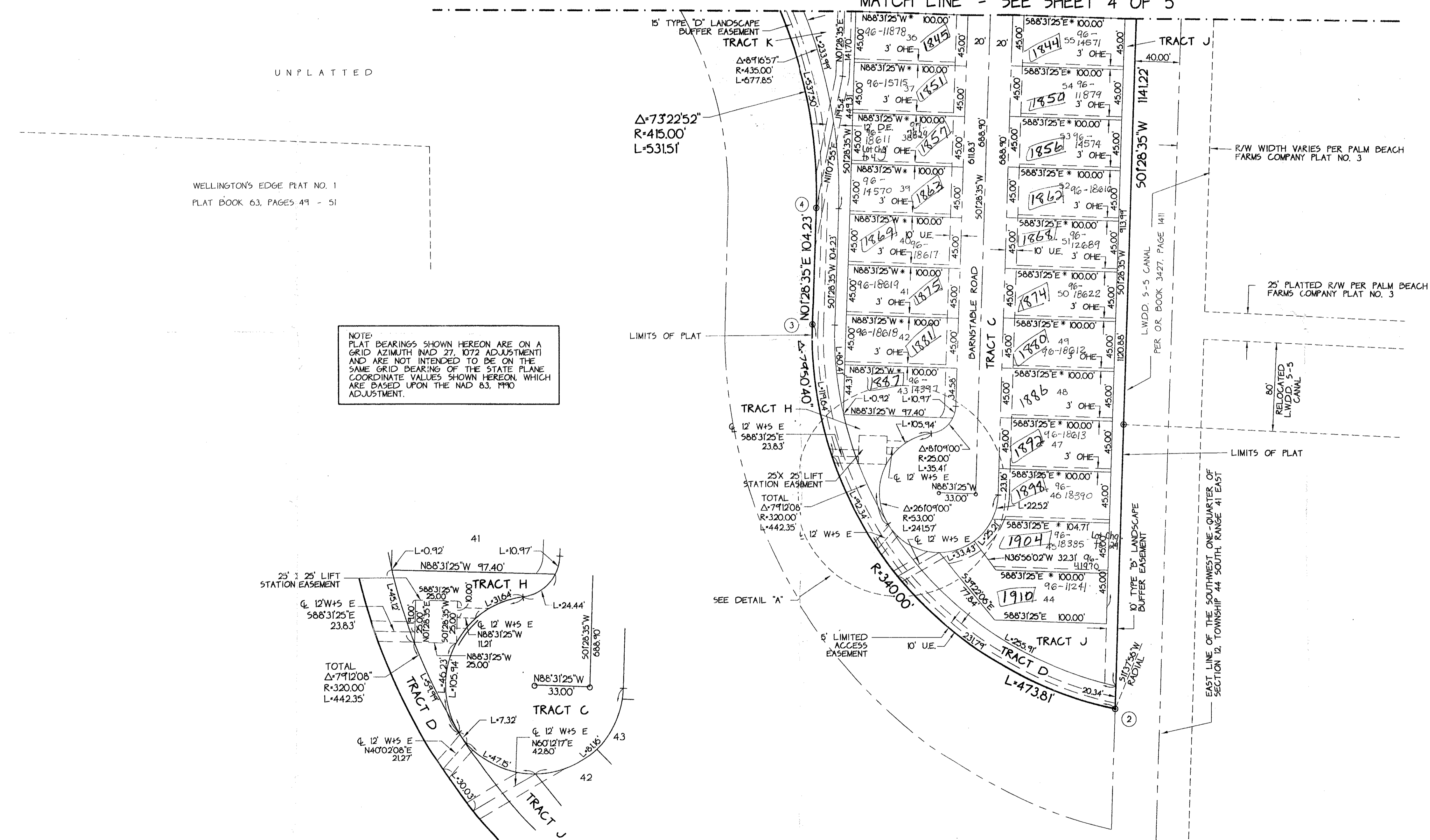
A PORTION OF THE SOUTHWEST ONE-QUARTER (SW 1/4) OF SECTION 12, TOWNSHIP 44 SOUTH, RANGE 41 EAST, PALM BEACH COUNTY, FLORIDA

THIS INSTRUMENT PREPARED BY JAMES E. PARK, P.L.S.
WILLIAMS, HATFIELD & STONER, INC. - ENGINEERS PLANNERS SURVEYORS
1901 SOUTH CONGRESS AVENUE, SUITE 150, BOYNTON BEACH, FLORIDA 33426

SHEET 5 OF 5



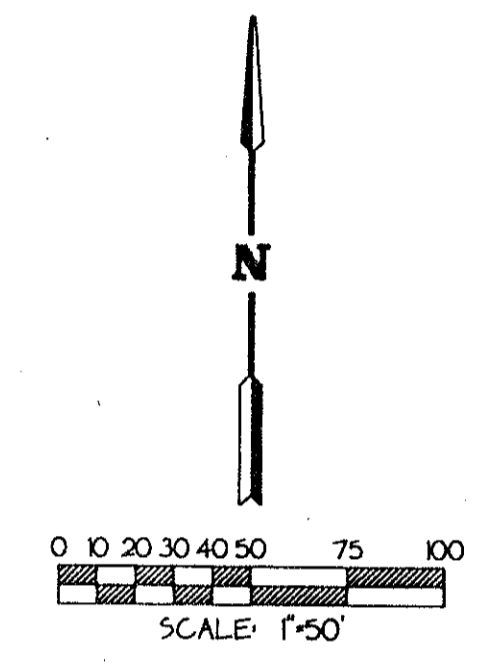
MATCH LINE - SEE SHEET 4 OF 5



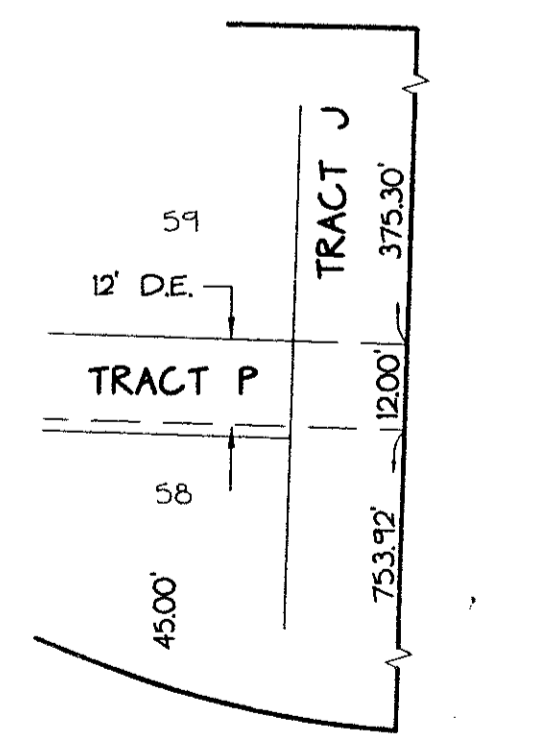
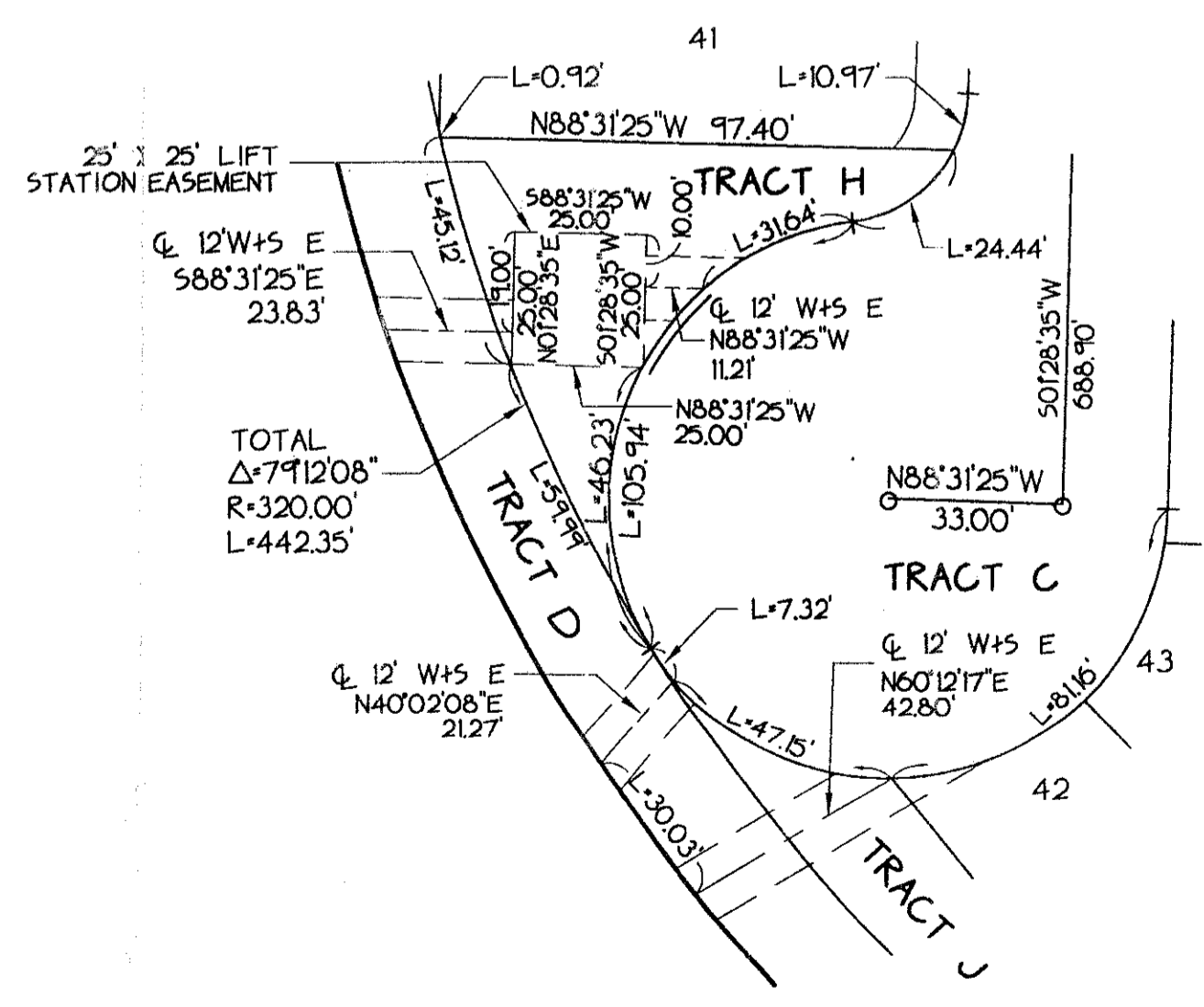
UNPLATTED

WELLINGTON'S EDGE PLAT NO. 1
PLAT BOOK 63, PAGES 49 - 51

NOTE:
PLAT BEARINGS SHOWN HEREON ARE ON A GRID AZIMUTH NAD 27, 1072 ADJUSTMENT AND ARE NOT INTENDED TO BE ON THE SAME GRID BEARING OF THE STATE PLANE COORDINATE VALUES SHOWN HEREON, WHICH ARE BASED UPON THE NAD 83, FPD ADJUSTMENT.



PET 86-32N
5/2/4/G



0332-113

TAZ-732

DATE 7/1/96
DRAWN BY J. PARK
CHECKED BY J. PARK
DATE 7/1/96
DRAWN BY J. PARK
CHECKED BY J. PARK